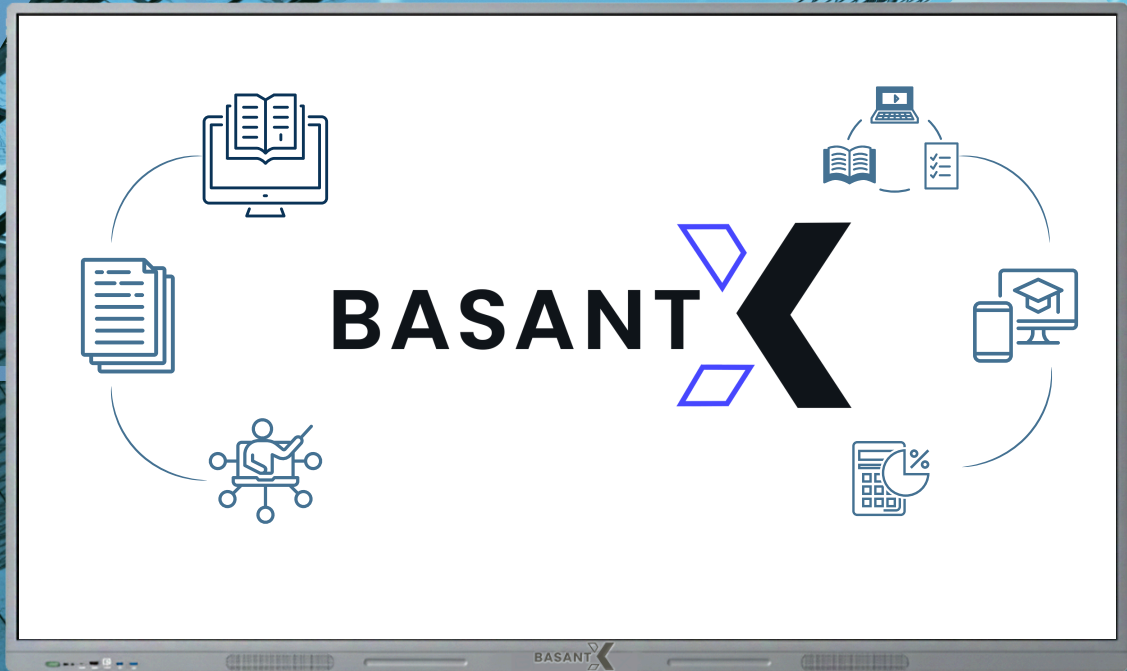


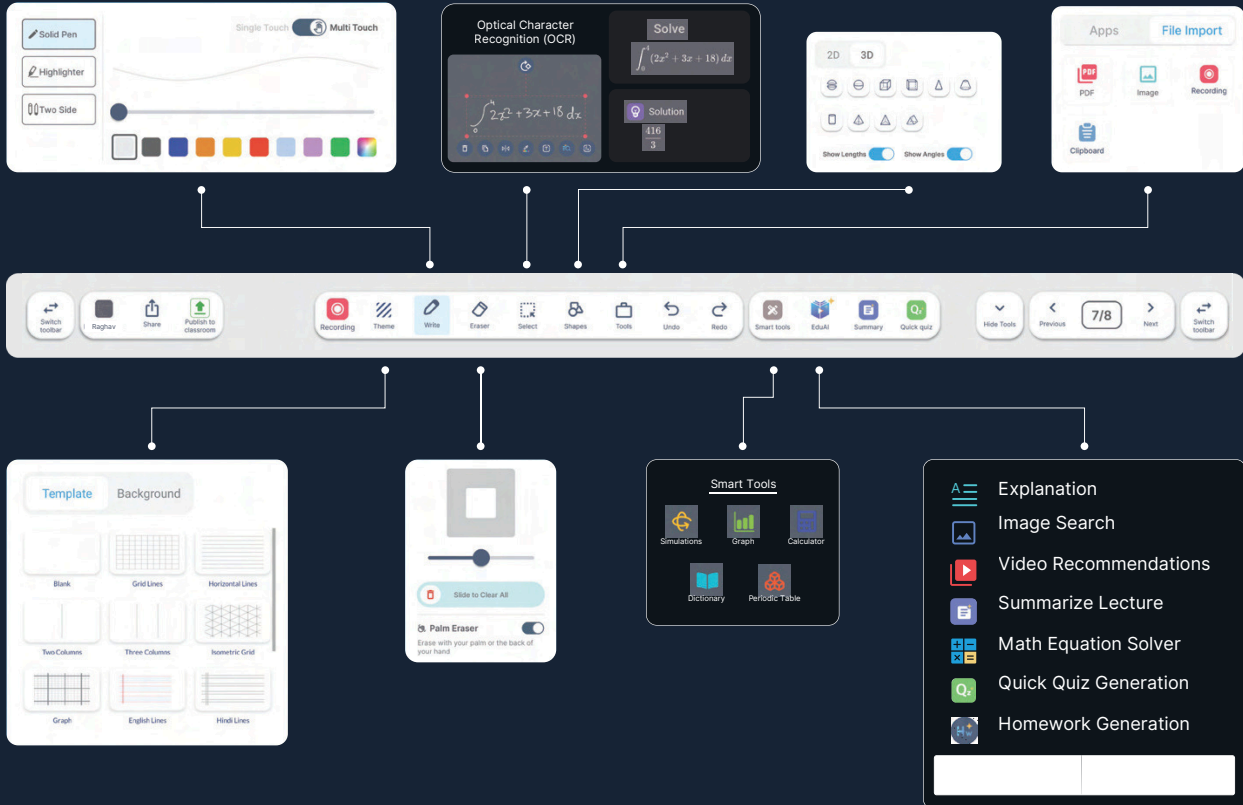


BASANT EDTECH

TOUCH THE FUTURE



ALL-IN-ONE TEACHING WHITEBOARD



Template

Let's you choose different page templates like grids, column, lines and layouts

Smart Tools



Run virtual experiments.



Create charts from data.



View element details.

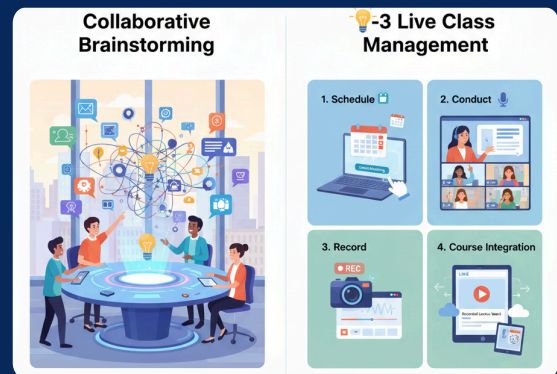
Edu AI (OPT)

An interactive learning platform uses AI that helps students in image searching, explanation, maths equation solving, quick quiz generate etc.



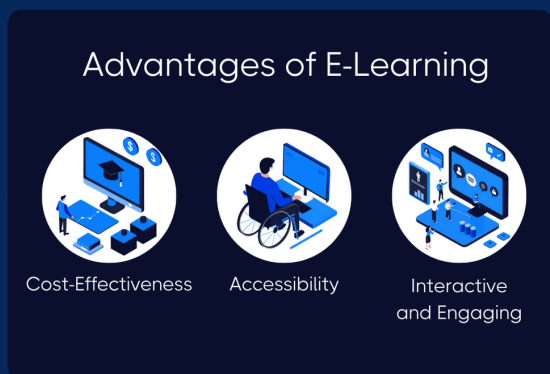
Interactive Quizzes -

quizzes with an advanced digital whiteboard uses to write, annotate, and automatically generate precise shapes



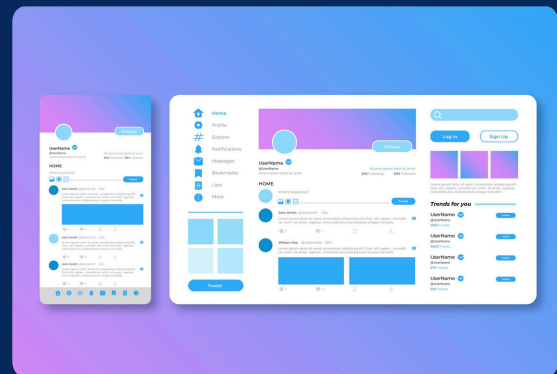
Collaborative Brainstorming -

It is a team process used to generate many diverse ideas by combining group members' thoughts.



E-Learning -

Its primary goals are to provide adaptive content tailored to individual student needs and to free up teachers' time for more meaningful interaction.



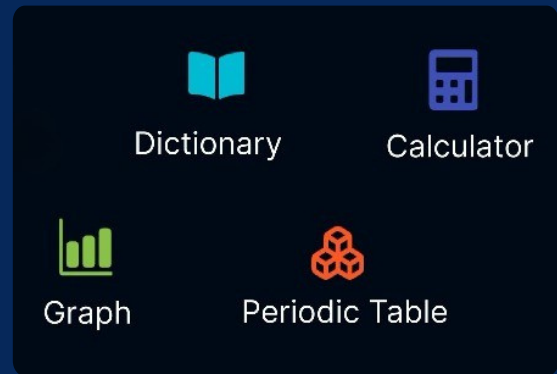
Templates -

A pre-formatted file or framework. It provides layout and style to help users quickly create documents, designs, or products.



Optical Character Recognition -

A technology that converts different types of text images (scanned documents, photos) into editable, machine-encoded text.



Translating Problems -

To solve algorithmic challenges using code, providing instant feedback on correctness and efficiency with Simulations, graphs, calculator etc.

OPTIMIZED FOR THE FUTURE

UNLEASHING SPEED, EFFICIENCY AND CUTTING-EDGE DESIGN.



In-Built NFC
Card reader
(OPTIONAL)



Speaker



Unbreakable



AUTHENTIC GOOGLE EXPERIENCE



Google Play

Access all your favorite apps
directly on the X2 IFPD



Google Android 14

Latest & authentic
experience



Optimized Performance with Google Services

Smooth & efficient
app experience

Secure & updated
with Google services



Google Docs Editor

Open files directly
from your X2 Panel using
any Google Docs Editor



Google Play Protect

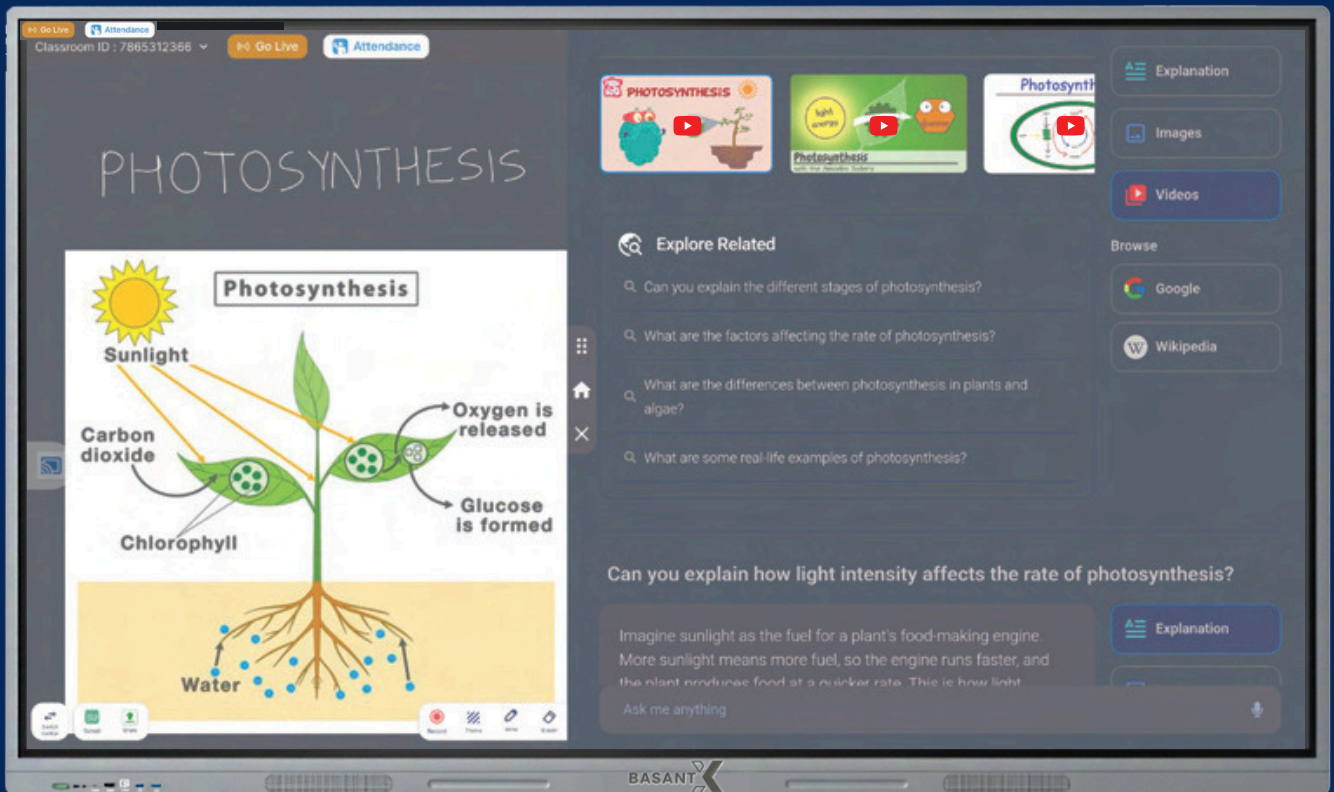
Experience Enhanced Security



System Apps

Pre-installed on X2 series

AI-POWERED TEACHING ASSISTANT (OPTIONAL)



EduAI

AI-Powered
Teaching Assistant



Explanation



Image Search



Video Recommendations



Summarize Lecture



Math Equation Solver



Quick Quiz Generation



Homework Generation

Ask me anything

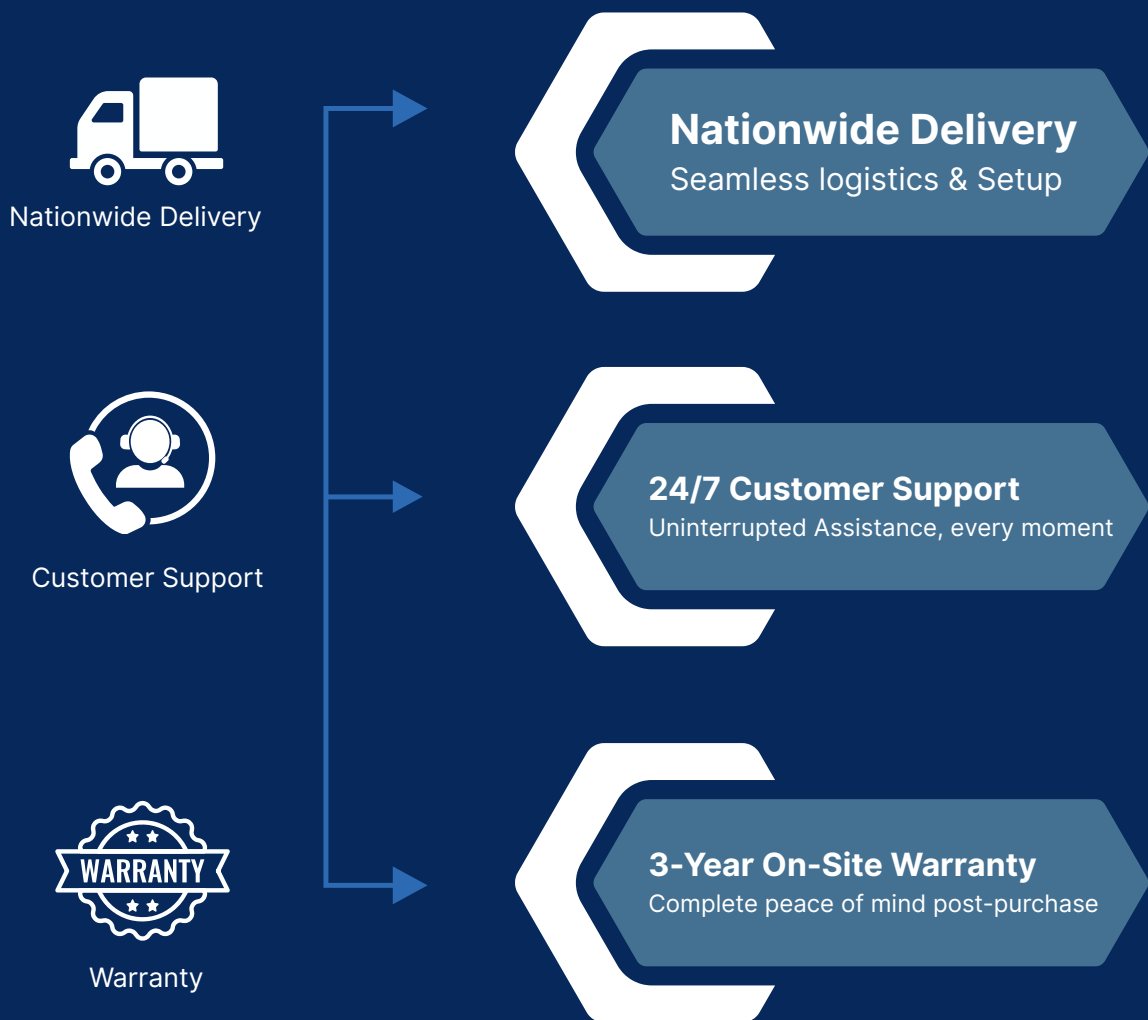


HARDWARE SPECIFICATION

Model Name	BASANTX65, 75 & 86 08/128
Panel Size	65" / 75" / 86 "
Response Time	≤ 4 ms
Backlight Type	DLED
Viewing Angle	178° (H / V)
Display Colours	1.07B (10 bit)
Frequency	60Hz
Resolution	3840(H) x 2160 (V)
Brightness	400cd/m2
Life Span	> 50,000 hrs
Contrast Ratio	15000:1
Speaker	20W*2 Speakers
Touch Specification	Infrared Sensing Technology
Surface Protection and Touch Point	4mm toughened glass and 40 touch points
CPU	ARM Octa Core processor (8core), 1.9GHz
GPU	Quad Core Mali G52MP2 (V100)
RAM/ROM	8 GB DDR4 / 128 GB ROM
Wireless Connectivity	WIFI, BLUETOOTH AND HOTSPOT
REAR I/O INTERFACE	HDMI IN, USB, USB TOUCH, AUDIO OUT, LAN, SPDIF OUT, RS 232 and other ports
POWER CONSUMPTION W/O OPS	<400W
Voltage	100-240AC}, 50/60 Hz



Your Smart Path to Endless Learning.



7351222666, 9105634250

Plot No.232, Vishwakarma Industrial Estate, Panchli Khurd, Meerut, U.P. 250002